



# COMMUNITY CONNECTION

SPENCER MUNICIPAL UTILITIES

FEBRUARY 2017

## SPECIAL POINTS OF INTEREST:

- Water Construction Update
- LED Lighting
- Electric System Maintenance-Tree Trimming
- Contact Info

## Water Construction Update

Phase 2 of construction at the SMU water plant renovation is nearly complete and we have returned to treating water for distribution as we did before construction started. There are still some minor parts of the project to be finished up over the next few months, but they will not affect treatment or distribution to customers.

Thank you for your patience as we all experienced some changes in the water as we started making the updated facility operational.

We know the next few weeks will be a time of adjustment as you have some calcium, lime and rust buildup to clean up. If you have a water softener, you'll need to adjust the settings for softer water.

When cleaning up, we suggest looking for products for the appropriate surface designed to take care of calcium, lime and rust buildup.

The remaining construction will continue and be finished up as weather allows. Once it is complete this summer, we will be hosting an open house for customers to see the facility.

Again, thank you for your patience throughout the construction process and we look forward to providing quality water to the residents of Spencer for future generations!



## LED Lighting

As part of the 2017 Resource Conservation program, SMU has lighting included for customers who want to save energy and money with their lighting. According to BeBright, lighting makes up 12% of your electric bill.

LED bulbs work by numerous small lights outfitted with microchips and the light sources illuminate as electrons move through a semiconductor material. LED's can be used in many of the same places as incandescent or CFL bulbs including both inside and outside applications.

To make it easy for customers to upgrade their lighting to LED, SMU has partnered with Iowa BeBright. This is a lighting discount program so customers can receive the savings right from the participating retailer and there are no rebates, paperwork or hassles.

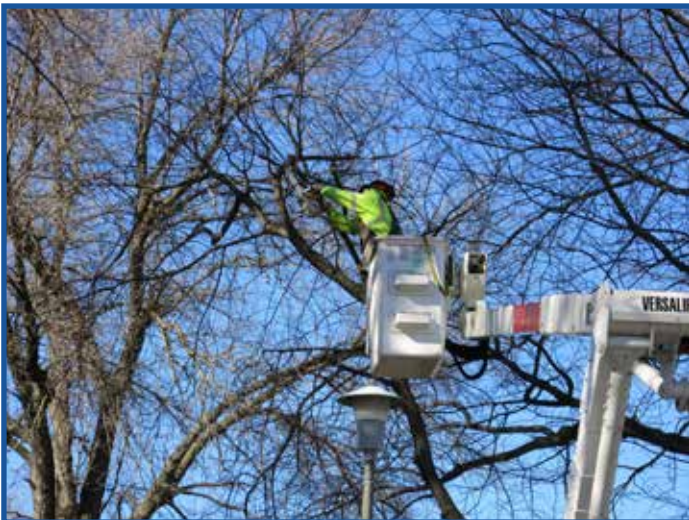
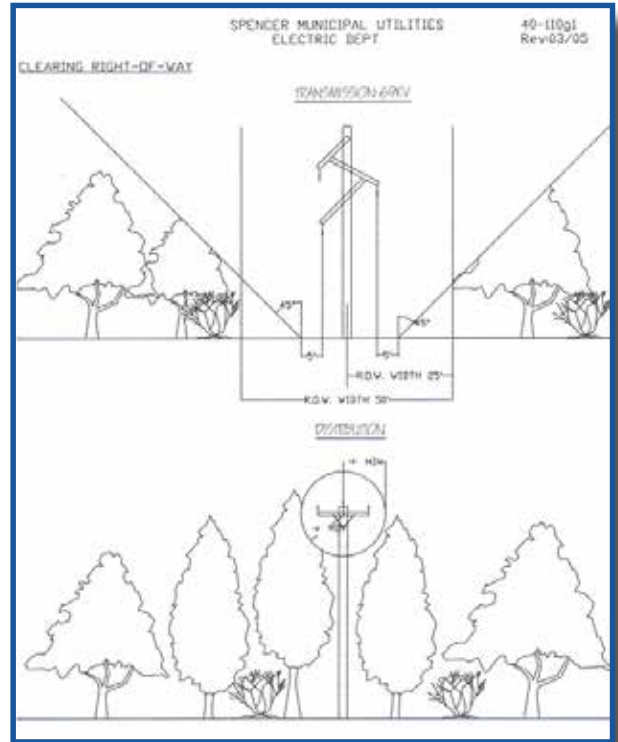
To find a list of local retailers, you can go directly to the Iowa BeBright website at: [iowabebright.com](http://iowabebright.com) or find the link to them on the Energy Efficiency page of SMU's website.

To see complete details of SMU's Resource Conservation program or a copy of the rebate forms, visit our website at [www.smunet.net](http://www.smunet.net). Energy Star LED bulbs that aren't purchased at a BeBright retail location are eligible for rebate under SMU's program.



# Electric System Maintenance-Tree Trimming

Every year SMU completes various maintenance tasks on our electric system as with all of our utilities. We've recently been out trimming trees around streetlights and overhead power lines. We only address trees in or around our equipment and will work with customers who may want a tree removed to make sure they are a safe distance from our equipment.



## CONTACT INFORMATION

Have you changed any of your contact information in the last year? If so, please call SMU at 580.5800 during normal business hours Monday-Friday from 8am to 5pm to make sure we have the correct information associated with your account.



 **SMU**  
Spencer Municipal Utilities  
520 2nd Avenue East, Suite 1  
Spencer, IA 51301  
p: 712.580.5800  
[www.smunet.net](http://www.smunet.net)

 printed on recycled and recyclable paper

